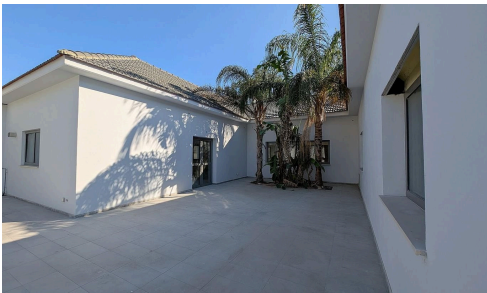


#3266



Water is illustrative



3 Bed Bungalow at Moni, Limassol

€490,000

📍 Moni, Limassol City Suburbs

An elegant ground-floor detached residence of 260 sqm, built in 2012, located in a peaceful residential area of Moni with excellent access to Limassol. The property is just 300m from the A1 Nicosia–Limassol highway and 2.2km from the beach.

The home offers a spacious open-plan living, dining, and kitchen area with fireplace, three bedrooms including a master bedroom with en-suite shower, a shared family bathroom, guest WC, laundry room, and internal staircase leading to attic space suitable for storage or additional use.

Bedrooms

 3

Bathrooms

 5

Covered

 260 m²

MON
DAY
SQR



Sofia Ioannou

📞 (+357) 99802490

📧 sofia@mondaysquare.com

