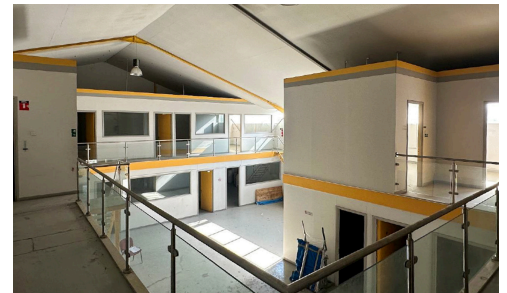


#4099



## Warehouse 850m<sup>2</sup> and Plot at Dali - Nisou

📍 Nisou, Nicosia Countryside

Spacious resale warehouse offering 850 m<sup>2</sup> of internal space, situated in the well-connected area of Nisou. This property is ideal for businesses seeking ample storage, manufacturing, or distribution space in a strategic location.

Nisou is known for its convenient access to major road networks, making it a popular hub for commercial and light industrial activities. The area provides a quiet, organized setting with a growing local infrastructure, suitable for companies wanting proximity to main cities and transport links.

Built in 2009, the warehouse stands on a large plot, offering plenty of maneuverability for vehicles and additional

Covered

📏 850 m<sup>2</sup>

Energy efficiency rating

🌿 Exempt

MON  
DAY  
SQR



**Sofia Ioannou**

☎ (+357) 99802490

📧 sofia@mondaysquare.com

